



Profile for Process Control Applications

Integrating people and technology

In mission-critical monitoring environments, such as process control, optimal situational awareness and precise data interpretation are essential. However, many console operators struggle because they work in poorly designed control rooms.

Studies have found that the design of an operator workspace is directly related to the ability to perform to the standards required. The layout of command and control consoles in these monitoring environments has become a primary focus. This is achieved by improving communication, integrating people and technology and enhancing team collaboration to avert disasters.

Eaton's Profile Advanced Console System was created specifically for command and control environments. Its high-performance, modular design improves console operator's access to equipment, sitting position and sight lines while reducing potential risk of repetitive stress injury.

Features & Benefits

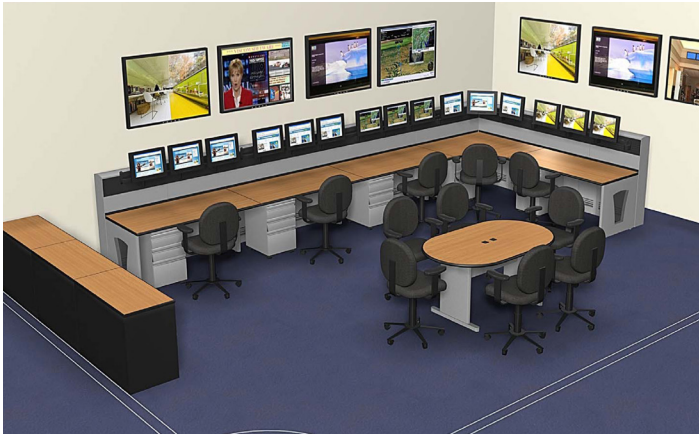
- Unique core design can be configured for either single- or double-sided workstations
- Core connector permits a variety of angled configurations from comfortable cockpit viewing of monitoring equipment to shared workstation platforms
- Stackable wall system for applications requiring a large number of monitor displays
- Optional electronic or manual height-adjustable worksurfaces for sit-to-stand applications
- Superior power and cable management for easy service access

Market Solutions

- Oil and Gas
- Utilities
- Industrial/Manufacturing
- Network Operation Center
- Mining
- Transportation

Design, Layout & Installation

You will get a better feel for your proposed system before it's installed with the 3D renderings our skilled CAD engineers create.



Our total service philosophy also includes certified installation teams so that your system is assembled with an expert touch. Should you ever need to reconfigure or expand, our installers are available to assist.

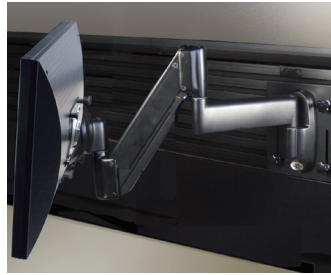
Relevant Standards

- ANSI/BIFMA X5.5 – 2008 Desk/Table Products
- GREENGUARD Indoor Air Quality Certified



Control Room Furniture & Accessories

Eaton offers a full range of accessories and power products to completely outfit your monitoring environment as well as other areas of your facility.



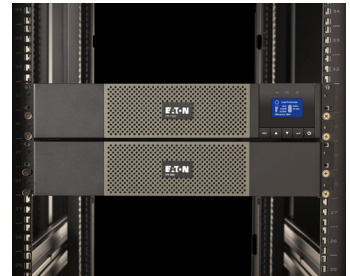
A wide range of FPD mounting solutions, featuring Centris® technology, lift monitors off the work surface and provide smooth, fingertip tilt with +/- 15-degrees of movement.



CPU caddies and dockers allow you to efficiently store computers while providing ease of access to connections and outlets.



Customized desktop rackmount modules house a wide range of equipment and instrumentation and keep important technology within arm's reach of an operator.



Eaton's portfolio of ePDUs, UPSs and other power products address the specific needs of your mission-critical application.



Popular for shared information access, these resource centers are available in 36" and 42" diameters. Worksurface remains stationary while lower levels offer full rotation.



Choose from a full selection of seating options to make your monitoring center a more ergonomic work environment.

For more information, contact
WhiteSpace Canada at 1-800-667-4020
or email us at info@whitespacecis.ca